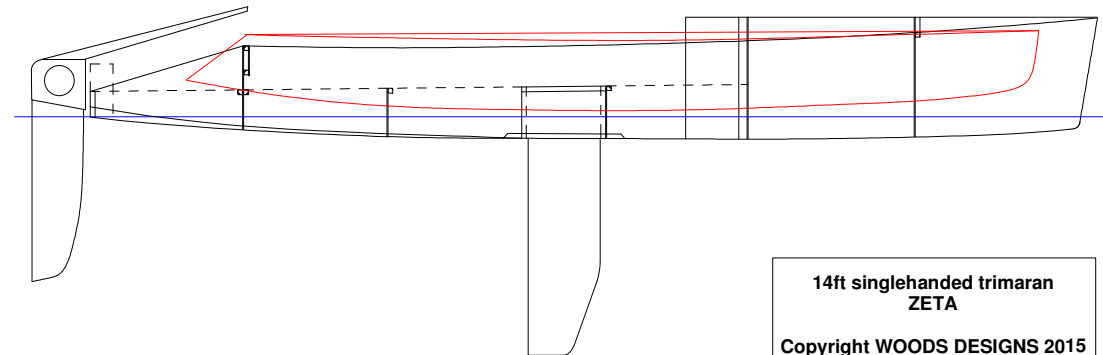
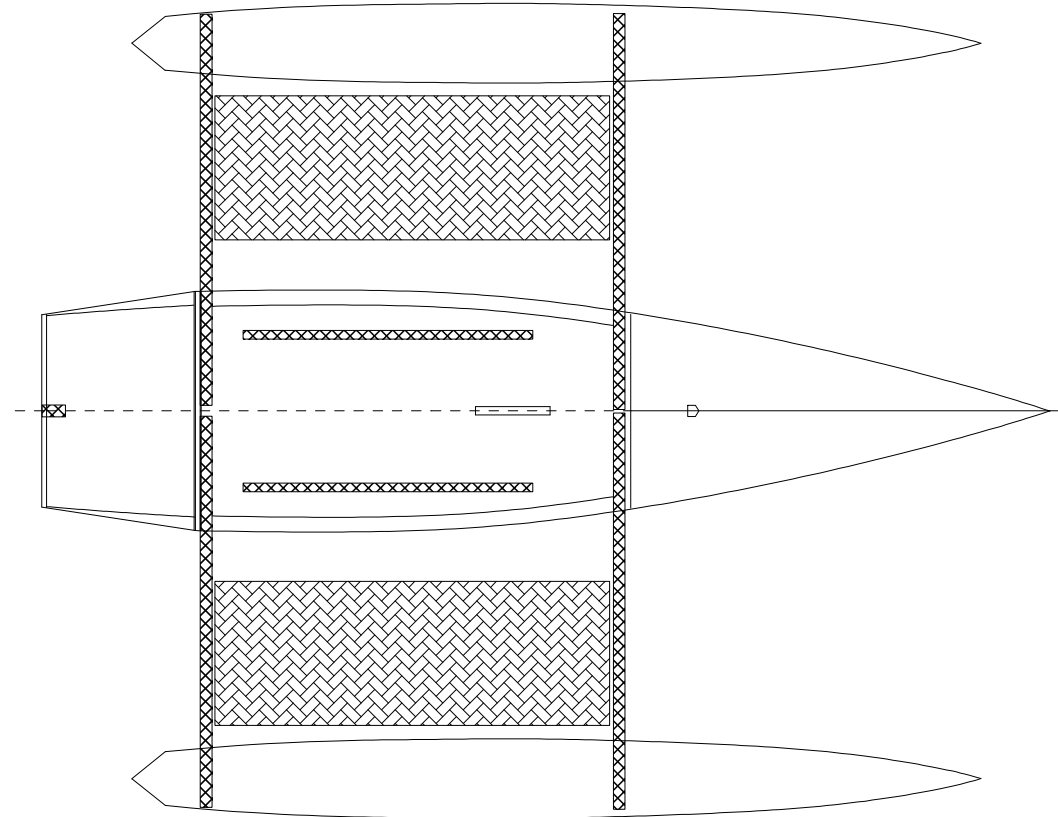
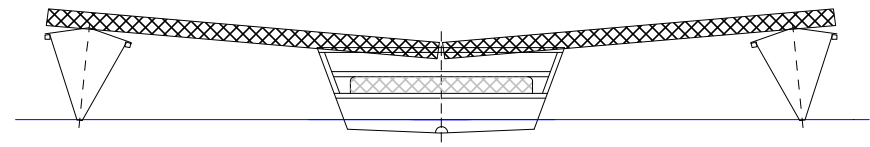


LOA 4.2m (14ft)
Overall Beam 3.4m (11ft2in)
Main Hull Beam .96m (3ft6in)
Empty Weight 90kgs (200lbs)
Sail Area 9.2sqm (100sqft)
jib and screecher optional
Draft 0.1m - 1.05m (4in - 3ft6in)
Crew capacity 1



14ft singlehanded trimaran
ZETA
Copyright WOODS DESIGNS 2015
www.sailingcatamarans.com